

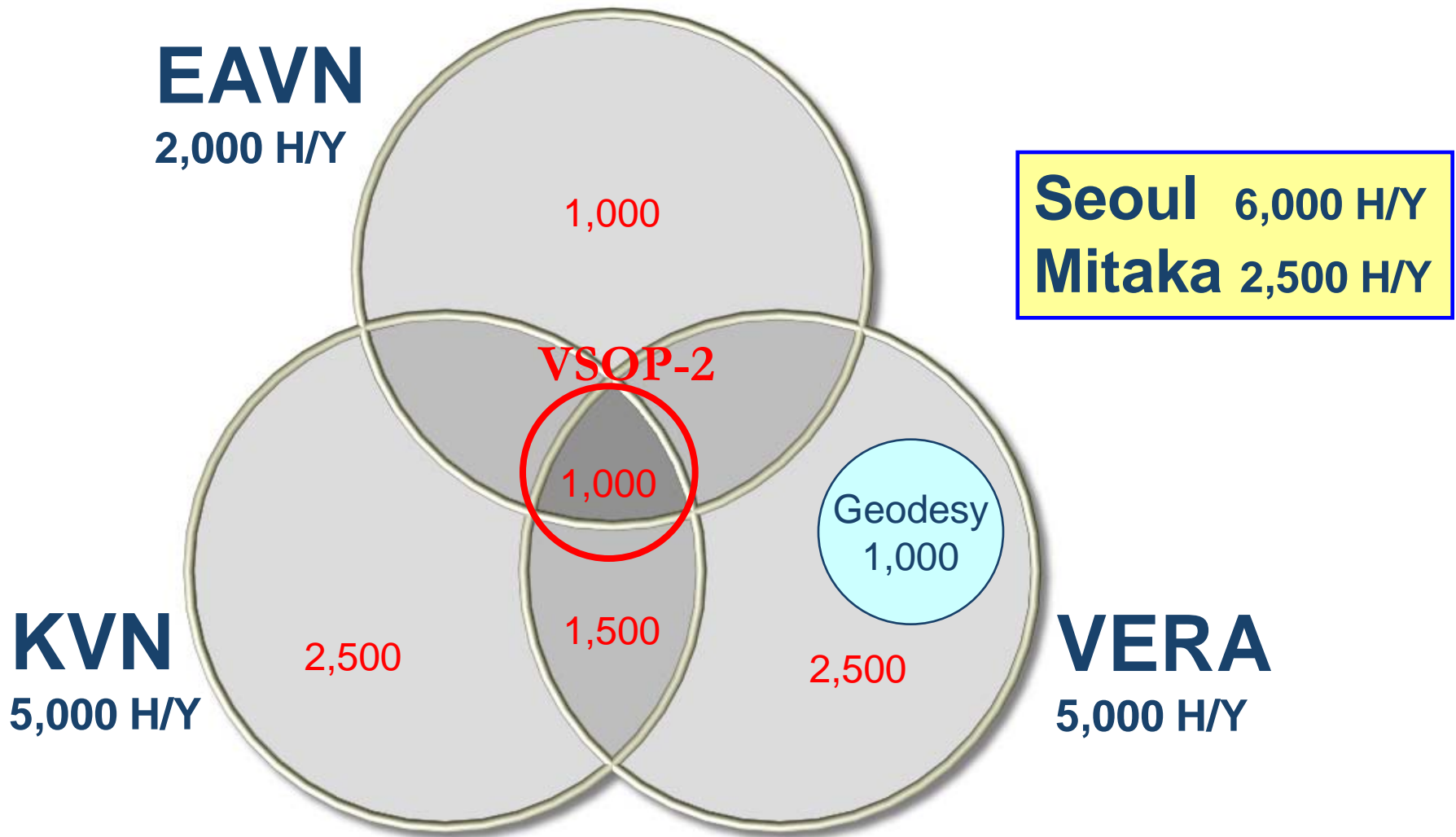
東アジアVLBIネットワークの方針

小林秀行

East-Asian VLBI Network array



Assumption of Observation Time

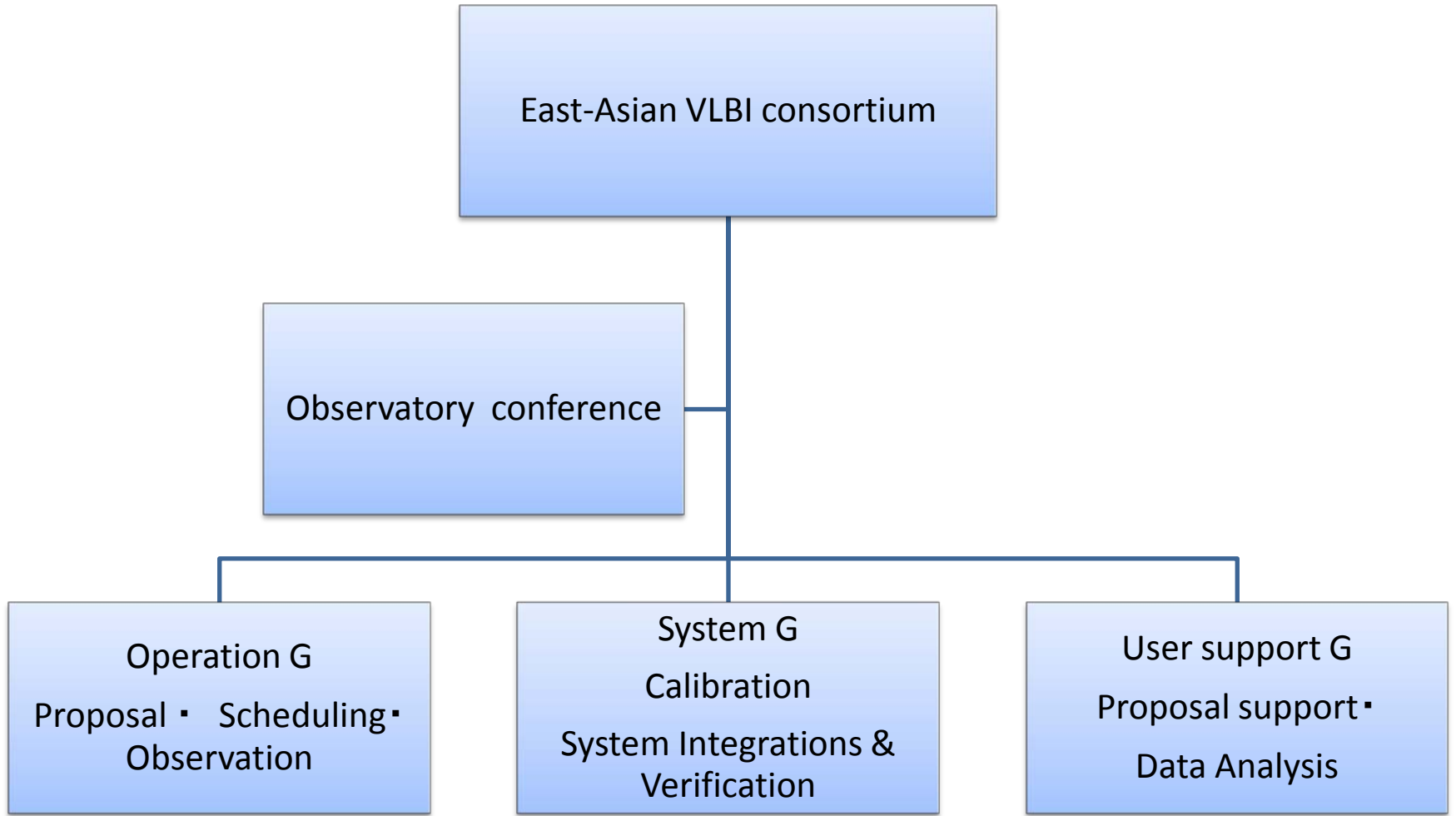


East Asia VLBI consortium
(under East Asia Core
Observatory Association)
2004~

Japanese VLBI network
Including VERA
(NAOJ)

Korean VLBI network
(KASI)

Chinese VLBI
Network
(SHAO?)



East-Asian VLBI consortium

Observatory conference

Operation G

Proposal ▪ Scheduling ▪
Observation

System G

Calibration
System Integrations &
Verification

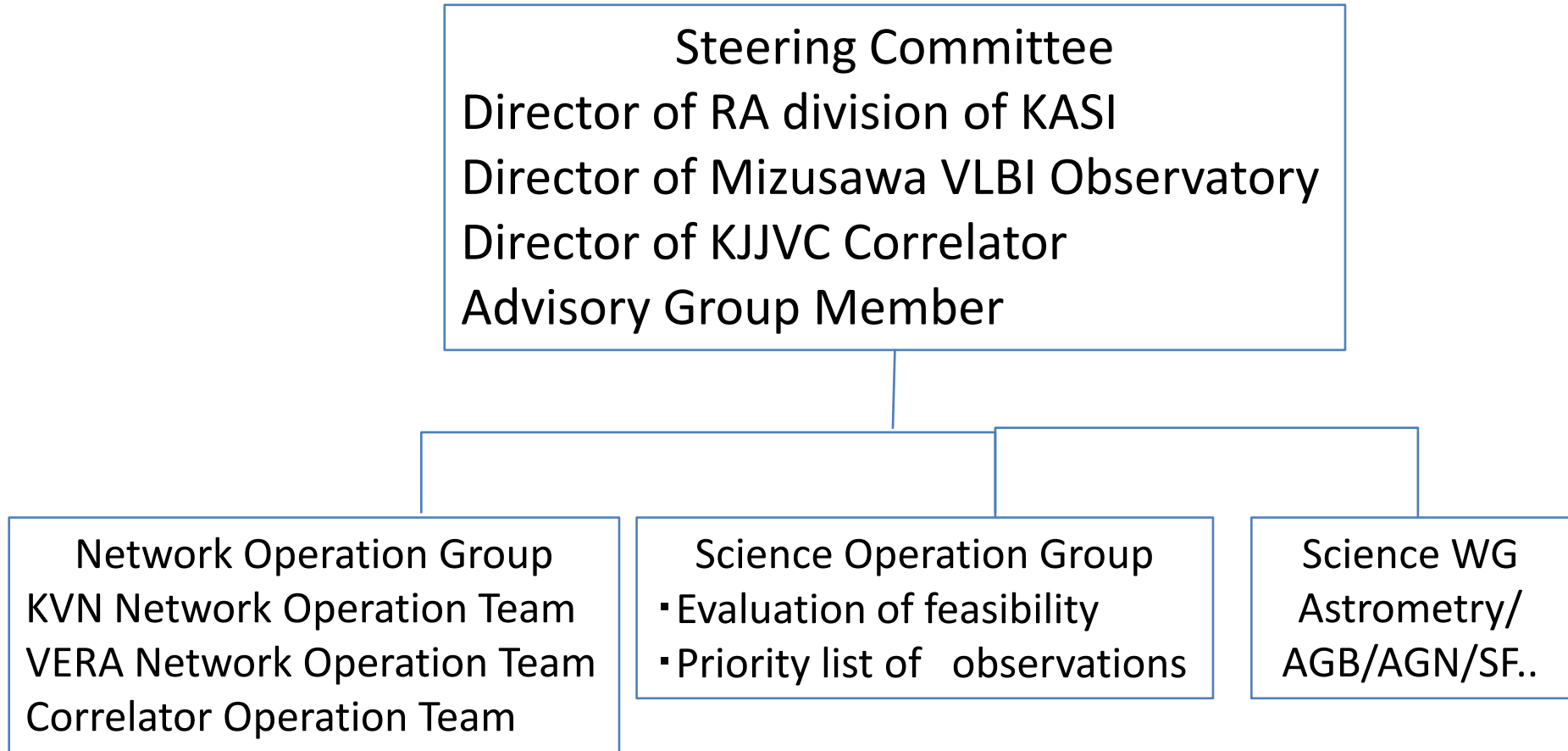
User support G

Proposal support ▪
Data Analysis

まずはVERAとKVNの試験・サイエンス 観測

- 大学連携は、現状128Mbpsでも可能な範囲で参加し、1Gbps化して本格参加
- 大学連携は、サイエンス・運用面では貢献が期待される
- CVNの参加は、今後の協議

Overall Structure



Science Operation

In the initial stage of science operation, the following tasks are important to be fixed as early as possible.

○ Early phase

- (1) Planning of network evaluation test observation
- (2) Execution of evaluation test
- (3) Planning of science demonstration
- (4) Execution of science demonstration

○ Later phase

- (1) Planning of the open-use strategy
- (2) Planning of project/key science strategy

VERA・KVN立ち上げスケジュール案

	2010		2011				2012			
	7-9	10-12	1-3	4-6	7-9	10-12	1-3	4-6	7-9	10-12
KVN(KQ帯)										
試験観測	■	■	■	■	■					
定常観測						■	■	■	■	■
ソウル相関局立ち上げ										
機能試験	■	■								
性能試験			■	■	■					
性能確認試験										
128Mbps	■	■	■							
1Gbps			■	■	■	■				
初期科学観測(Demo.観測)										
K/Q 1Gbps						■	■	■		
科学観測										
K/Q 1Gbps							■	■	■	■